

Motors that Move
Your World Forward.



Hindustan Electric Motors

Empowering Industries with Precision and Performance

Hindustan Electric Motors (HEM) was founded with a vision to provide high-quality, reliable electric motor solutions, establishing itself as a trusted name in the global industrial landscape. With decades of expertise, we have continuously set new standards in performance, energy efficiency, and sustainability, empowering industries to thrive.

As an ISO 9001:2015 certified company, we operate across 5 lakh sq. ft. state-of-the-art production facilities in Mumbai, Daman, and Vapi, ensuring we meet evolving market needs with precision and agility. Our journey has been defined by relentless innovation, cutting-edge technology, and a deep-rooted commitment towards excellence. By blending expertise with advanced manufacturing capabilities, we continue to energise industries, drive technological progress, and forge lasting partnerships that shape the future.

Why Choose Hindustan Electric Motors?



- H** High Efficiency Solutions - IE 4 and IE 5
- I** Innovation - In-house Research and Development facilities
- N** Nationwide Reach - 60+ Cities, 100+ Dealers, 110+ Service Centers
- D** Dependable Performance- Built to Last
- U** Unmatched Delivery - Offers Just in Time Delivery
- S** Solution Tailored to Applications- Cooling towers, Duplex cooling, etc.
- T** Trusted Since 1973 - Over 5 Decades of Manufacturing Expertise
- A** Assured Quality and Compliance - QMS Guided Process
- N** Nurturing Rotating Machines - 60L+ Operational Motors in the Field

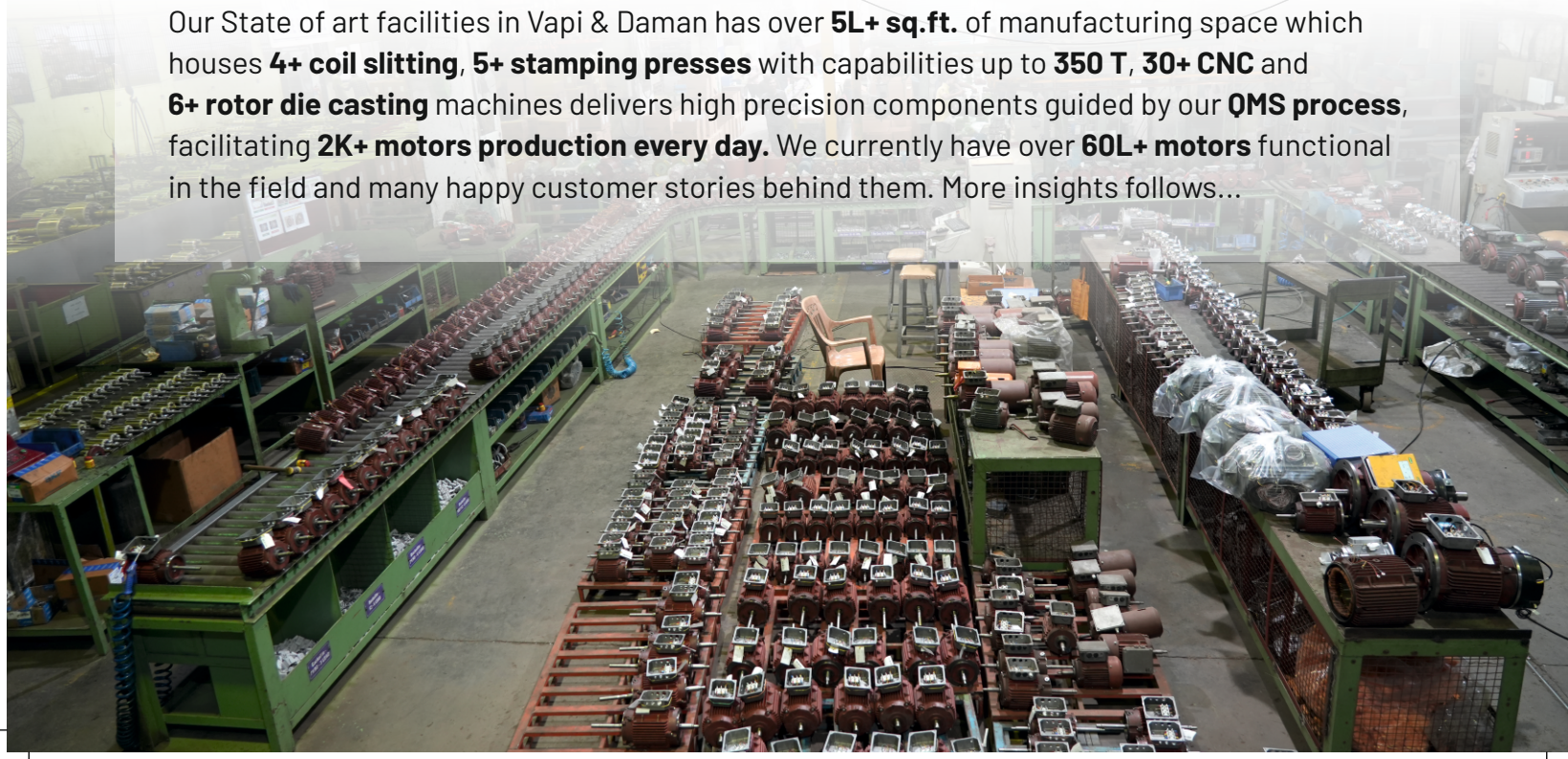
Proudly Made in India, Made for the World

At Hindustan Electric Motors, we take pride in being one of the largest Indian motor manufacturers, distinguished by our commitment to excellence and innovation. What sets us apart in the industry is that we manage all our operations in-house, ensuring unparalleled quality and control at every stage of our manufacturing process. From design and engineering to production and assembly, our comprehensive approach allows us to deliver superior products that meets the diverse needs of our customers. With a dedicated team of experts and state-of-the-art facilities, we are not just building motors; we are driving the future of the industry.



Our In-House Manufacturing and Machining Process:

Our State of art facilities in Vapi & Daman has over **5L+ sq.ft.** of manufacturing space which houses **4+ coil slitting**, **5+ stamping presses** with capabilities up to **350 T**, **30+ CNC** and **6+ rotor die casting** machines delivers high precision components guided by our **QMS process**, facilitating **2K+ motors production every day**. We currently have over **60L+ motors** functional in the field and many happy customer stories behind them. More insights follows...



Stamping:

Ensuring Durability and Precision

Stamping that is made of Electrical Grade Steel, is the Most Critical Component of any electrical Motor that determines Quality of Motor with respect to Efficiency and Durability.

We ensure to procure these Electrical Grade Stampings directly from manufacturers (JSW / POSCO) and we punch them in-house at our Punching Shop that play a vital role in producing high-quality Stator & Rotor with perfect fit. By maintaining full control over our manufacturing processes, we ensure consistency, efficiency, and reliability in every stamped part.



Die Casting:

High-Performance, Robust Motor Components

Our Rotor Die Casting Machines are engineered to create strong, high-performing, durable motor parts through advanced die-casting techniques. With strict quality control at every stage, we ensure that each rotor meets the highest industry standards for precision, efficiency, and longevity.



Precision Manufacturing:

Our cutting-edge rotor die-casting technology ensures tight dimensional tolerances, delivering smooth and consistent motor performance.

Optimised Rotor Design:

Die casting allows lightweight yet durable rotor designs, promoting balanced rotation, reduced wear, and extended motor lifespan.

Fast Production and Scalability:

Advanced die-casting machines enables high-volume production without compromising quality, ensuring we meet the demands of large-scale motor manufacturing.

Energy Efficiency:

The lightweight, precisely cast rotors contributes to lower motor weight, improved energy efficiency, and enhanced overall performance, making them ideal for energy-sensitive applications.

In-House Machining Capabilities:

Ensuring Superior Motor Performance

Our in-house machining expertise combines advanced technology with skilled craftsmanship to manufacture electric motors and components that stand out in performance, reliability, and longevity. Using cutting-edge machining techniques, we ensure that every motor we produce meets the highest industry standards.

At Hindustan Electric Motors, our commitment to precision, quality, and innovation drives us to continuously enhance our manufacturing capabilities. This dedication ensures that every motor we produce powers industries worldwide with unmatched efficiency and durability.



Precision Engineering

Our state-of-the-art CNC (Computer Numerical Control) machines and expert manual machining techniques ensure exceptional accuracy and flawless finishes. With tight tolerances and superior craftsmanship, every component fits seamlessly, enhancing motor performance and reliability.

Tailored Customization

By managing the entire machining process in-house, we offer flexible, customised solutions for specialised motor designs. From custom rotor shafts and motor housings to stator components, we adapt to unique customer specifications with precision and efficiency.

Precision Turning and Milling

Utilising cutting-edge CNC machines, we execute high-precision turning and milling operations to craft intricate components with exceptional accuracy. These processes ensure a perfect fit and optimal functionality for motor assemblies.

Grinding and Finishing

Our in-house grinding and finishing techniques deliver smooth, high-quality surfaces, reducing friction and enhancing motor efficiency and longevity. Every component is refined to meet stringent industry standards.

Uncompromising Quality

Every machined component undergoes rigorous quality checks, ensuring high durability, precision, and performance. Using advanced measurement and inspection tools, we verify critical dimensions, tolerances, and material integrity to maintain the highest industry standards.

Optimised Production Efficiency

Our integrated manufacturing approach streamlines production, reduces lead times, and ensures complete quality control at every stage. This efficiency results in faster project completion while maintaining the superior performance and reliability that our customers expect.

Drilling and Boring

For complex components requiring precise hole patterns and internal diameters, our advanced drilling and boring capabilities ensure dimensional accuracy, even in the most demanding applications.

Assembly and Integration

Post-machining, every component undergoes expert assembly and seamless integration into a final motor unit. This meticulous process ensures flawless operation, durability, and peak performance in real-world applications.

Assembly and Testing:

Our state-of-the-art testing facilities rigorously assess quality, efficiency, and performance under real-world conditions. We recognise that final assembly and testing are critical to reliability, thus, every motor undergoes extensive scrutiny before delivery.



Rigorous Testing:

Every motor undergoes comprehensive testing to meet industry standards in performance, safety, and durability.



Cutting-Edge Technology:

Advanced testing equipment ensures real-world reliability before delivery.



Trusted Quality:

Customers can rely on our thoroughly tested motors for superior performance and long-term dependability.

Vacuum Pressure Impregnation (VPI) Treatment: Enhancing Motor Durability

VPI is an advanced process that strengthens motor windings by impregnating them with a specialised resin. This method involves removing air pockets through vacuum application. Forcing resin deep into the winding coils under pressure & hardening the resin to create a strong protective layer.



Key Benefits:

Complete Resin Penetration:

Ensures uniform insulation, preventing electrical arcing and degradation.

Protection Against Moisture and Contaminants:

Shields windings from dust, moisture, and industrial pollutants.

Enhanced Motor Longevity:

Reduces risk of electrical failures, extending motor life.

Optimised for VFD Operations:

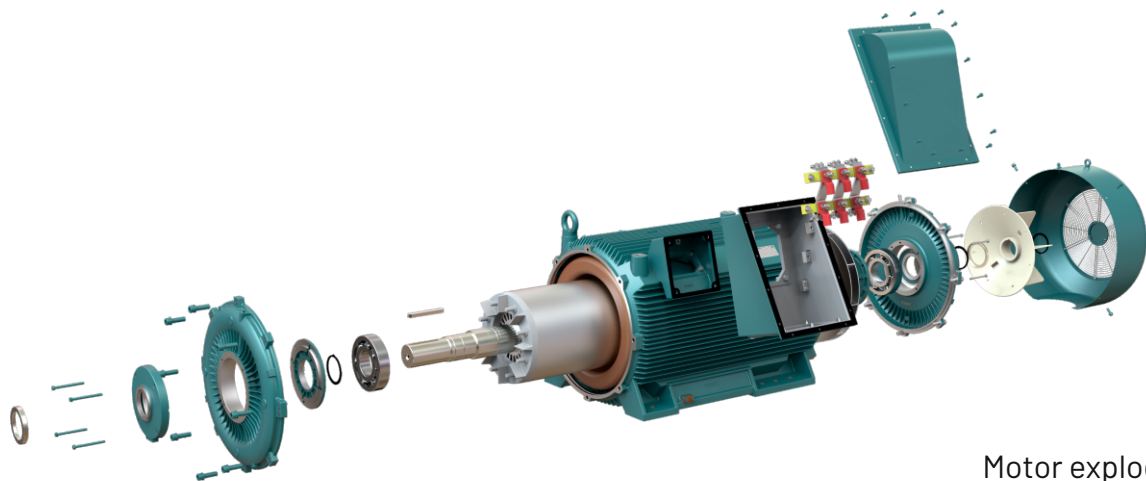
Improves insulation resistance against thermal and electrical stress.

By leveraging VPI Treatment, we enhance motor's efficiency, durability, and long-term reliability, making them ideal for demanding industrial applications.

Certification and Approvals

and many more...



Motor exploded view

IE5 Motors

Unmatched Performance, Unbeatable Savings.

IE5 motors offer ultra-premium efficiency, with 50% lower losses than IE3 motors and nearly 20% lower losses than IE4. This makes them ideal for energy-sensitive applications.

Powered by cutting-edge Induction Technology, they set a new standard in energy efficiency, delivering superior performance while significantly reducing energy consumption.

IE5 Induction motors can be started using conventional methods like Direct-On-Line (DOL) and Star-Delta without requiring inverters or additional electronic components.

Product Specifications:

Frame Size	Up to 280 MX
Power	Up to 75 kW
Polarity	2 and 4
Mounting	B3, B5, B14 & combinations
Voltage	415V \pm 10% or as required
Frequency	50Hz \pm 5% or as required
Protection	IP55 or superior on request
Ambient	50°C
Altitude	Up to 1000m above m.s.l.
Enclosure	IC411, others on request
Ins Class	Class F insulation with temp rise limited to class B
Operation	DOL / Star-Delta/ Soft-Starter / Inverter (VFD)

Technical Excellence:

These motors designed by utilising advanced materials and design techniques, including optimised rotor geometry, improved winding configurations, and high-quality magnetic materials, to achieve superior performance. These motors can be used with frequency converters and dynamically adjust speed according to demand, providing higher performance and efficiency in industrial automation and HVAC systems.

Key Applications:



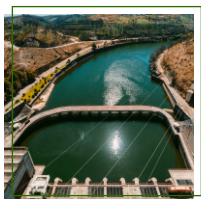
Water Treatment Plants



HVAC Systems



Blowers and Fans



Weirs & Sluices



Cooling Towers & Chillers



Food & Beverage



IE5 Motors Ultra-Premium Efficiency, Ultra-Superior Advantages.

Lowest cost of ownership, operating costs and payback period:

IE5 with Induction Technology offers an advantage over Synchronous Reluctance (SYRM) and Permanent Magnet (PMSM).

Low Noise and Vibration:

These motors are designed for smoother operation, ensuring minimal disruptions.

Reduced Carbon Footprint:

By consuming less energy, these motors help lowering greenhouse gas emissions associated with power generation.

**Experience the Power of
Performance, Reliability,
and Innovation.**

IE4 Motors

Efficiency Redefined, Performance Guaranteed

IE4 motors represent the forefront of energy-efficient motor technology. With its advanced design, high efficiency, and numerous benefits, these motors are ideal for organisations seeking to enhance their energy sustainability, reduce operational costs, and comply with environmental regulations.

IE4 Electric Motors are built to the highest standards, adhering to IS: 12615 and IEC: 60034-30-1 specifications.

Product Specifications: (Safe Area)

Frame Size	71 to 315 L
Power	0.37 kW to 200.0 kW
Polarity	2, 4, 6 & 8
Mounting	B3, B5 & B14 (Upto132 frame) & combinations
Voltage	415V \pm 10% or as required
Frequency	50Hz \pm 5% or as required
Protection	IP55 or superior on request
Ambient	50°C
Altitude	Up to 1000 m above m.s.l.
Enclosure	IC411, IC416, others on request
Ins Class	Class F insulation with temp rise limited to class B

Technical Excellence:

These asynchronous three-phase TEFC squirrel-cage motors feature cast iron construction. Premium bearings are pre-lubricated for life up to frame size 180, with re-lubrication arrangements available for larger frames.

Each motor is thoughtfully engineered with features like fixed bearings at the drive end and a drain hole arrangement to ensure durability and reliable performance.

Key Applications:



Fans & HVAC Systems



Hydraulics and Pumps



Compressors and Cooling Towers



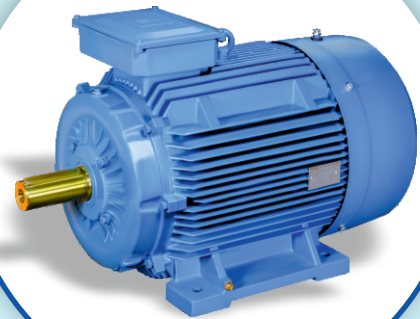
Cement, Sugar and Paper Plants



Pharma, Steel and Chemical Industries



Power-Intensive Equipment and many more



IE4 Motors Built for Today, Ready for Tomorrow

High Efficiency:

The super efficiency class currently, IE4 motors, deliver top-notch energy savings. IE4 motors operate at an efficiency level of 87% to 95% or higher, significantly reduces energy losses compared to lower efficiency classes (IE1, IE2 & IE3).

Consistent Efficiency:

Near-uniform efficiency from 50% to 100% of full load ensures savings even at part load conditions.

Minimised Maintenance Requirements:

The durability and efficiency of IE4 motors results in less wear and tear, reducing the frequency and costs associated with maintenance and repairs, thus minimising downtime.

**Unmatched Advantages
for Your Operations.**

IE4 Flameproof Motors

Safety and Savings Together

IE4 Flameproof motors present substantial advantages for all hazardous area environments. Most of the operations are continuously running and consume large amounts of energy for their various motor-driven applications.

IE4 Super Premium efficiency, enhanced performance, and in compliance with rigorous standards offers significant operational, financial, and environmental benefits.

Product Specifications:

Frame Size	80 FLP to 315 LX FLP
Power	0.37 to 132.0 kW
Polarity	2, 4, 6 & 8
Mounting	B3, B5 & B14 (Upto132 frame) & combinations
Voltage	415V \pm 10% or as required
Frequency	50Hz \pm 5% or as required
Protection	IP55 or superior on request
Ambient	50°C
Altitude	Up to 1000 m above m.s.l.
Enclosure	IC411, others on request
Ins Class	Class F insulation with temp rise limited to class B



Technical Excellence:

Our flameproof motors are developed to sustain a particular temperature range to dissuade flammable gases and vapour ignition.

The motor's compartment is cooled to retain the necessary temperature, which reduces the chances of the motor overheating and firing dangerous substances.

Key Applications:



Oil and gas



Paint



Pharmaceutical



Chemical and fertilisers



Ethanol



CBG segments



Lower operational costs and improved profit margins

Compliance with Standards and Certifications:

These include BIS, PESO, ATEX, and IECEX. These motors are approved by eminent consultants like EIL, Jacob and TOYO Engineering.

Reduced Carbon Footprint:

IE4 motors significantly reduce energy consumption, which is critical in the energy-intensive sectors.

Enhanced Performance in Harsh Environments:

Designed to withstand extreme temperatures, vibrations, and corrosive environments, IE4 motors maintain high performance, ensuring continuous operation in challenging conditions.

**Reliable. Robust.
Ready for Demanding
Operations.**

Duplex Cooling Motors

Power. Efficiency. Reliability.

HEM's Duplex Cooling Motors brings the future of motor technology to your operations. Designed with an innovative Dual Circuit Cooling Arrangement, these motors bridge the gap between high-tension and low-voltage applications, delivering higher power outputs, enhanced thermal management, and long-term reliability.

Product Specifications:

Frame Size	315 to 400 LX
Power	160.0 kW to 710.0 kW
Polarity	2, 4, 6 & 8
Mounting	B3, B35/V1 on request
Voltage	380V to 690V $\pm 10\%$ or as required
Frequency	50Hz $\pm 5\%$ or as required
Protection	IP55
Enclosure	IC411, IC416, others on request
Cooling Type	Dual Circuit Cooling
Ins. Class	Class F with temp rise limited to Class B

Technical Excellence:

Built for heavy-duty applications, HEM Duplex Cooling Motors offer a double-bearing system, dual-coated winding wires, and rugged construction that meets the demands of today's dynamic industries.

The Dual Circuit Cooling Arrangement enables two separate cooling systems, one external and one internal, ensuring optimal heat dissipation, longer motor life, and efficient, reliable operation under high loads.

Key Applications:



Cement plants



Steel plants



Power Generation plant



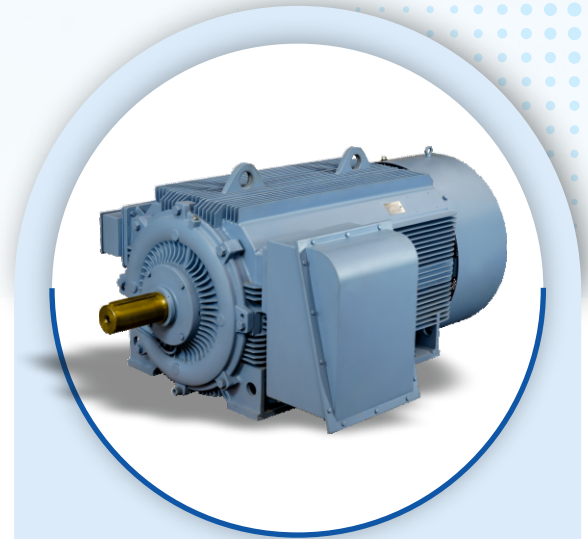
Sugar plants



Wastewater Treatment



Paper and Pulp



Unmatched Advantages for Your Operations



Squirrel Cage Rotor:

Simplifies maintenance with robust, low-wear design.



Variable Speed Ready:

Compatible with VFDs and soft starters for versatile applications.



High Starting Torque:

Handles heavy-load applications with ease.

**High Power,
Higher Performance**

IE3 & IE2 Motors

Powering Efficiency, Performance and Sustainability

Our IE3 and IE2 motors are designed for the industrial sector. They are solid, reliable, and can be used for different applications. Motors are standardised, asynchronous motors for general applications conforming to IS & IEC standards. They guarantee reliability and high performance, as they are highly adaptable to customers' needs.

Product Specifications:

Frame Size	63 to 400 LX
Power	0.12 to 710.0 kW
Polarity	2, 4, 6 & 8
Mounting	B3, B5, B14 & combinations
Voltage	415V \pm 10% or as required
Frequency	50Hz \pm 5% or as required
Protection	IP55 or superior on request
Ambient	50°C
Altitude	Up to 1000m above m.s.l.
Enclosure	TEFC, others on request
Ins Class	Class F insulation with temp rise limited to class B

Technical Excellence:

IE3 and IE2 motors operate at cooler temperatures, thanks to improved ventilation and lower losses, reducing thermal degradation of insulation and extending motor life. This makes them ideal for continuous-duty applications in demanding industrial environments.

Equipped with high-quality bearings and an efficient lubrication system, these motors offer smooth operation.

Key Applications:



Fans & HVAC Systems



Hydraulics and Pumps



Compressors and Cooling Towers



Cement, Sugar and Paper Plants



Pharma, Steel and Chemical Industries



Power-Intensive Equipment and many more



Minimise Losses, Maximise Output.



Higher Efficiency:

Reduced energy losses, leading to lower electricity costs



Lower Heat Generation:

Less wear and tear, ensuring a longer lifespan



High Reliability:

Designed for continuous operation with minimal maintenance

Your Partner in Peak Performance.

IE3 & IE2 Flameproof Motors

High-Efficiency Flameproof Motors for Hazardous Environments

Built for safety, reliability, and performance, Hindustan Electric Motors' IE2 & IE3 Flameproof Motors are designed for use in explosive and hazardous atmospheres, such as coal mines, oil rigs, refineries, and chemical plants.

Engineered as per IS/IEC 60079 standards for Gas Groups IIA & IIB, these motors offer enhanced protection, superior efficiency, and exceptional durability, ensuring safe and seamless operations in critical environments.

Product Specifications:

Frame Size	71 FLP to 315 LX FLP
Power	0.12 to 200.0 kW
Polarity	2, 4, 6, & 8
Mounting	B3, B5, B14 & combinations
Voltage	415V \pm 10% or as required
Frequency	50Hz \pm 5% or as required
Protection	IP55 (Superior protection available on request)
Ambient	50°C
Altitude	Up to 1000m above mean sea level
Enclosure	Totally Enclosed Fan Cooled (TEFC)
Ins Class	Class F with temperature rise limited to Class B



Technical Excellence:

Hindustan's flameproof motors are meticulously crafted to withstand extreme industrial conditions, ensuring reliable performance and enhanced safety. With IP55 protection, these motors prevent dust and water ingress, while the TEFC enclosure ensures efficient cooling in harsh environments.

Key Applications:



Oil Rigs



Oil Refineries



Pharmaceutical



Petrochemical



Gas Industries



Chemical Plants



Flameproof Engineering, Tangible Benefits



High Efficiency:

IE2 and IE3 motors minimize energy consumption, reducing operational costs.



Rugged Construction:

Built to endure tough industrial conditions with maximum reliability.



Superior Insulation:

Class F insulation with temperature rise limited to Class B for extended motor life.

Powering Critical Industries.

Inverter Duty Motors

Stronger Insulation, Longer Life

These motors operate with variable voltage and frequency supplied by an inverter, enabling precise speed control for different processes and applications while optimising energy efficiency. Typical Variable Frequency Drives (VFDs) operate at very high switching frequencies, generating steep voltage transients (dV/dt) of up to 1.2kV/μs. These rapid pulses impose significant stress on motor windings. When standard-insulation motors are powered by inverters, repeated high-voltage surges can degrade insulation strength and significantly shorten motor lifespan.

Product Specifications:

Frames	100 L to 400 LX
Rating	1.5 to 710.0 kW
Poles	2, 4, 6, 8
Mountings	B3, B5, B14 & combinations
Protection	IP55
Enclosure	IC411, IC416, others on request
Rated Voltage	415V
Rated Frequency	50Hz

Technical Excellence:

Unlike conventional motors, these are equipped with separate cooling fans, which ensure continuous airflow and effective heat dissipation, even at lower speeds where natural cooling is insufficient. This prevents excessive temperature rise, enhancing motor efficiency and lifespan. These motors deliver cutting-edge insulation, robust construction, and superior thermal management, making them the ideal choice for demanding industrial applications.

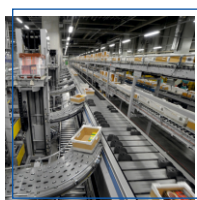
Key Applications:



Pumps and Fans



Textile Machinery



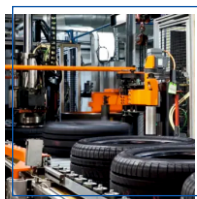
Conveyors



Cranes & Hoists



Food & Beverage Industry



Plastic & Rubber Industry and many more



Smart Speed, Maximum Savings

Consistent Cooling at Low Speeds:



Equipped with separate cooling fans, these motors maintain optimal temperature control even when operating at lower speeds.

Enhanced Bearing Protection:



Motors of frame size 200 and above can be fitted with insulated bearings as optional feature, extending bearing life and preventing premature failures.

Reliable Performance at Higher Speeds:



Designed to operate beyond 50Hz with careful management of the voltage-to-frequency (V/f) ratio.

**Consistent Power at
Every Frequency.**

Aluminium Body Motors

Lightweight Efficiency with Aluminium Body Motors.

Designed for high performance and durability, Hindustan Electric's IE2 Induction Motors feature a lightweight aluminium construction, making them perfect for industries requiring efficient yet easy-to-handle motors. With IP55 protection, these motors are built to withstand harsh industrial conditions while delivering consistent, energy-efficient performance.

Product Specifications:

Motor Type	IE2 & IE3 Induction Motors
Construction	Aluminium Body - Lightweight & Corrosion-Resistant
Frame Sizes	63 to 132
Mounting	Foot Mounted (B3, B5 and combinations)
Insulation Class	F
Protection	IP55 - Suitable for harsh environments
Duty	Continuous Rated (S1 Duty)
Voltage	415V \pm 10% or as required
Frequency	50Hz \pm 5% or as required
Enclosure	IC411

Technical Excellence:

Our aluminium body motors offer superior heat dissipation, ensuring longer operational life and consistent performance. Their lightweight design allows for easy handling and installation, while the corrosion-resistant body makes them ideal for demanding industrial environments.

Key Applications:



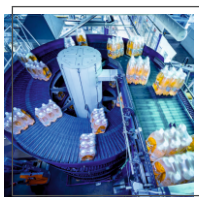
Packaging Machines



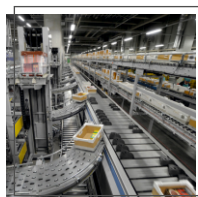
Textile Industry



Printing Machines



Food & Beverage Industry



Automation and Packaging



Machine Tools



Smart Engineering, Tangible Benefits



Lightweight & Durable: Aluminium construction reduces overall weight without compromising strength.



Low Noise Performance: Ensures quieter, smoother operation in sensitive environments.



Enhanced Heat Dissipation: Prolongs motor lifespan by overheating prevention.

**Light on Weight.
Big on Power.**

Multi-Speed Motors (Standard and Flameproof)

Versatility in Motion, Efficiency in Every Turn

Multi-speed motors are designed to deliver flexible speed variations with a single motor, eliminating the need for multiple units and optimising performance and cost efficiency. With standard and flameproof variants, these motors offer reliable operation across diverse industrial applications. Whether you're driving cranes, machine tools, or pumps, these motors provide seamless speed control with reduced energy consumption and minimal mechanical wear.



Product Specifications:

Frame Size	71 to 355 LX, 71 FLP to 315 LX FLP
Power	0.075 to 132.0 kW (ratings are indicative)
Polarity	4/2, 8/4, 6/4, 8/6 & others
Mounting	B3, B5, B14 & combinations
Voltage	415V ±10% or as required
Frequency	50Hz ±5% or as required
Protection	IP55 or superior on request
Ambient	50°C
Altitude	Up to 1000m above m.s.l.
Enclosure	Totally Enclosed Fan Cooled (TEFC)
Ins Class	F
Duty	S1

Technical Excellence:

HEM's multi-speed motors are engineered with variable pole configurations, enabling smooth transitions between speeds without the need for external controllers. Their energy-efficient design reduces power wastage while ensuring optimal performance. With squirrel cage and slip ring types available, these motors are built to handle varying loads with ease.

Key Applications:



Textile Industry



Machine Tools



Cranes & hoists



Centrifugal Fans & Pumps



Paper Industry



Agitator

Seamless Performance, Unmatched Advantages



Multiple Speed Operation:

One motor, multiple speeds – enhancing flexibility and process control.



Energy-Efficient Design:

Reduces electricity consumption with minimal power loss.



Smooth Speed Transition:

Ensures stable performance across varying speed demands.

Every Turn adds Value.

Cooling Tower Motors

(Standard and Flameproof)

Engineered to Precision, Built for Cooling

Cooling Tower Motors are purpose-built for the air conditioning and refrigeration industries, offering superior performance in demanding cooling applications. These motors feature flange-mounted designs with totally enclosed construction, ensuring protection in harsh operating environments. Designed with long shaft construction and externally threaded ends, these motors are ideal for mounting fan blades directly, facilitating better airflow and enhanced cooling efficiency. With compact and lightweight designs, they offer easy maintenance and versatile installation, available as standard catalogue models or custom-built solutions to meet specific project requirements.

Product Specifications:

Frame Size	71 to 355 LX, 71 FLP to 315 LX FLP
Power	0.37 to 150.0 kW
Polarity	4, 6, 8, 10 & 12
Mounting	B5
Voltage	415V ±10% or as required
Frequency	50Hz ±5% or as required
Protection	IP55
Ambient	50°C
Altitude	Up to 1000m above m.s.l.
Cooling Method	IC 410
Enclosure	Totally Enclosed Non Ventilated (TENV)
Ins Class	Class F insulation with temp rise limited to class B
Duty	S1

Technical Excellence:

Their enclosed construction protects sensitive internal components from dust, moisture, and other environmental factors. The long shaft construction with externally threaded ends ensures direct attachment to fan blades, improving cooling efficiency. The compact design and reduced weight not only enhances performance but also make installation and maintenance elementary. These motors are built to offer optimal energy efficiency and long service life, even under continuously operating in cooling applications.

Key Applications:



HVAC Systems



Cooling Towers & Chillers



Air Conditioning Systems
Refrigeration Systems



Chemical & Fertiliser



Rubber



Pharma



Reliable Motors for Optimal Cooling



Improved Cooling Efficiency:
The long shaft construction with externally threaded ends enhances airflow and cooling performance by directly mounting fan blades.



Compact & Lightweight Design:
Easy to install and maintain, even in space-constrained premises.



Durability in Harsh Conditions:
The totally enclosed construction protects against moisture, dust, and other external factors.

Performance that
Powers Productivity.

Brake Motors

Precision Stopping for Critical Applications

Brake motors are designed for applications requiring instantaneous stopping of the driven load. They operate on a "fail-safe" principle, inferring the brake remains engaged (ON) by default and is released only when power is supplied. This ensures safety and reliability, especially in cases of power failure, where the brake automatically activates to halt motion.

Product Specifications:

Frame Size	63 to 250 MX
Power	0.12 to 55.0 kW
Polarity	2, 4, 6 & 8
Mounting	B3, B5, B14 & combinations
Voltage	415V \pm 10% or as required
Frequency	50Hz \pm 5% or as required
Protection	IP54
Ambient	50°C
Altitude	Up to 1000m above m.s.l.
Enclosure	TEFC
Ins Class	Class F insulation with temp rise limited to class B
Braking Torque	Up to 800 Nm
Brake coil voltage	190V DC (Other voltages on request)
Brake Type	Normally ON Type

Technical Excellence:

A brake motor is a combination of an AC induction motor and an electromagnetic brake DC type, with the brake mounted on the non-driving end of the motor. In DC brake motors, a rectifier is integrated to convert AC supply into the required DC voltage, which energises the brake coil and controls braking action. The rectifier is powered by any two terminals within the motor's main terminal box, ensuring easy integration.

Key Applications:



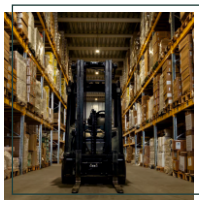
Textile Machinery



Machine Tools & printing machines



Cranes & hoists



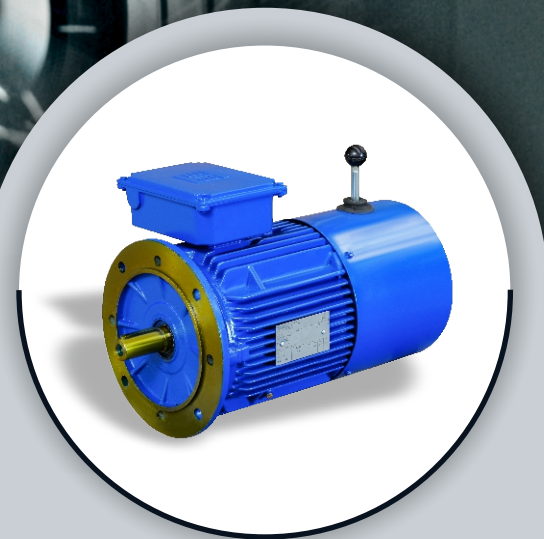
Material handling



Elevator and Escalator



Packaging Machinery



**When Safety Matters,
We Stop at Nothing.**



Easy Maintenance & High Durability:

Designed with a simple and rugged construction, ensuring long-lasting performance with minimal upkeep.



No Separate DC Supply Required:

The built-in rectifier provides the necessary DC voltage, eliminating the need for an external DC power source.



Compact and Space-Saving Design:

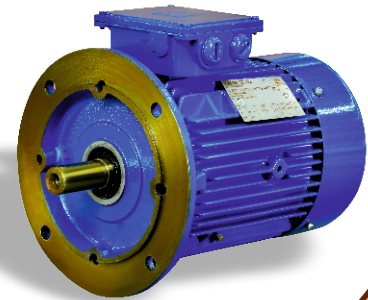
The rectifier is mounted inside the main terminal box, removing the need for a separate terminal box and simplifying installation.

**Power in Motion.
Precision in Stopping.**

Crane Duty Motors

Strong. Steady. Crane-Ready

Our Crane Duty Motors are engineered to deliver high reliability and superior performance in demanding applications requiring frequent starts, stops, and reversals. Designed to withstand heavy-duty operations, these motors are ideal for cranes, lifts, and material handling systems, ensuring smooth and efficient load movement.



Product Specifications:

Frame Size	71 to 315 LX
Power	0.18 to 200.0 kW
Polarity	4, 6 & 8
Mounting	B3, B5, B14 & combinations
Voltage	415V \pm 10% or as required
Frequency	50Hz \pm 5% or as required
Protection	IP55
Ambient	50°C
Altitude	Up to 1000m above m.s.l.
Enclosure	TEFC
Ins Class	Class F insulation with temp rise limited to class B
Rotor Type	Squirrel cage aluminium die-cast
Duty	S3, S4 or S5

Technical Excellence:

Hindustan Crane Duty Motors are built for high performance and reliability, featuring robust cast iron construction, low-loss high-permeability steel stampings, and advanced dual-coated copper windings for efficient operation. With vacuum pressure impregnation (VPI), PTC thermistors for thermal protection, dual earthing terminals, and anti-condensation heating, these motors ensure durability, safety, and seamless operation even in demanding conditions. Optional integral electromagnetic DC fail-safe brakes further enhances control and precision in high-duty cycle applications.

Key Applications:



Cranes & Lifts



Construction and Infrastructure



Ports

Built for the Lift, Designed to Last



Low Maintenance and High Durability:

Robust materials and precision engineering ensures long-term reliability.



Customisable Features:

Options like integral brakes, space heaters, and thermal protection enhance adaptability.



Energy Efficient:

High-grade materials and optimised designs attributes to lower energy consumption.

Ideal for applications
requiring frequent
start-stop and reversing
operations.

Roller Table Motors

Built for Heavy Loads, Engineered for Efficiency

Roller Table Motors are specially engineered for use in steel plants and heavy industries, where machines operate under extreme stress and need to meet stringent performance requirements. These motors are built to accelerate individual roller tables within short time spans while handling high torque fluctuations and frequent direction changes under full load. Capable of withstanding sudden material blockages and operational disturbances, these compact, rugged motors are designed to perform efficiently in challenging environments, providing consistent reliability and high torque output even under harsh operating conditions.

Product Specifications:

Frame Size	112 M to 200 L
Power	0.75 to 15.0 kW
Polarity	4, 6 & 8
Mounting	B3, B5
Voltage	415V \pm 10% or as required
Frequency	50Hz \pm 5% or as required
Protection	IP55
Ambient	50°C
Altitude	Up to 1000m above m.s.l.
Enclosure	TENV
Ins Class	F

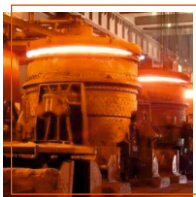
Technical Excellence:

They offer superior acceleration and breakdown torque capabilities, which are essential for operating under high-load conditions. Their compact, robust design allows them to thrive in harsh environments, ensuring uninterrupted performance. These motors can also withstand sudden torque fluctuations caused by material blockages and operational disturbances, making them ideal for steel plants and rolling mills where reliability is key.

Key Applications:



Rolling mills,
Heavy industry



Steel, Aluminium,
Metal processing



Iron and steel industry



Seamless Motion, Unstoppable Performance

High Torque Capacity:

High-rated acceleration and breakdown torques to handle rapid load changes and frequent direction reversals without performance degradation.



Rapid Acceleration and Reversal:

Designed for short acceleration times and quick direction changes, these motors are perfect for environments where speed and flexibility are crucial.



Durable and Robust Design:

Built to endure harsh conditions such as extreme temperatures, heavy vibrations, and sudden load variations.



The Backbone of Steel
Industry Motion.

Special Customised Motors

Tailored Power, Precision Performance

Special and Customised Motors are engineered for unique industrial applications, offering flexible solutions designed to meet specific performance demands. Built to operate in challenging environments, these motors deliver exceptional efficiency, reliability, and adaptability. With customised specifications for voltage, frequency, insulation, and protection, they are the perfect fit for specialised operations, ensuring consistent and optimised performance.

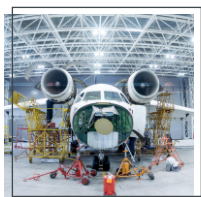
Product Specifications:

Motor Type	Special Application & Custom-Built Motors
Variants:	Dual Voltage / Dual Frequency Motors Low Vibration Motors for Machine Tools Motors for Extreme Climatic Conditions Motors for Import Substitutes
Frame Sizes	As per requirement
Mounting	Foot / Flange / Combination as required
Insulation Class	F / H (as per application)
Protection	IP55 / IP56 / Higher as per requirement
Duty	Continuous (S1) or as per customer specification
Voltage	415V $\pm 10\%$ / Custom Voltage as per application
Frequency	50Hz $\pm 5\%$ / 60Hz $\pm 5\%$ or Dual Frequency
Enclosure	Totally Enclosed Fan Cooled (TEFC)/Special Enclosure on request
Customisation	Available as per specific industry needs

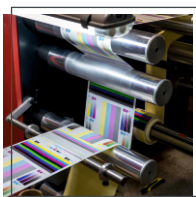
Technical Excellence:

Special and customised motors are built to handle extreme conditions with precision and durability. Their high-performance insulation, advanced protection systems, and robust design make them ideal for industries that demand reliable and consistent power delivery. These motors can withstand frequent start-stop cycles, sudden load changes, and demanding environmental conditions, ensuring seamless operations.

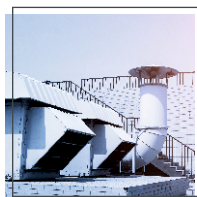
Key Applications:



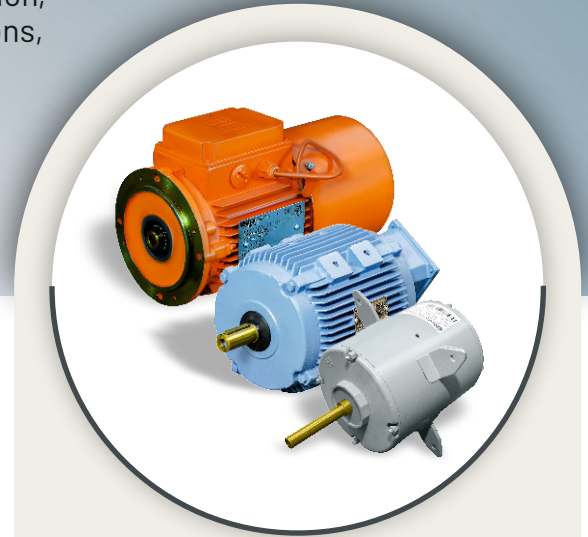
Defence & Aerospace



Printing Machinery



HVAC



Unmatched Reliability



Optimised for Unique Applications:

Tailored torque, speed, and power output to match specific operational needs.



Enhanced Safety and Durability:

Advanced insulation and protection systems for safe and reliable performance.



Longer Operational Life:

Built to endure harsh conditions, ensuring longevity and minimal maintenance.

Your Need. Our Motor.
Perfectly Engineered.

Smoke Extraction Motors

Engineered for Safety, Built for Reliability

Hindustan Smoke Extraction Motors are designed to ensure safe and reliable performance in both normal and emergency conditions, even at extremely high temperatures. These motors are specifically built for air intake and fume extraction in industrial and commercial buildings, making them a critical component for smoke extraction systems.

Whether installed in tunnels, large shopping malls, warehouses, or enclosed parking lots, these motors ensure continuous ventilation and enhanced safety in case of fire.

Product Specifications:

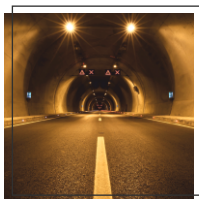
Frame Size	71 to 280
Power	0.37 to 90.0 kW
Polarity	2P & 4P
Mounting	B3, B5 or combinations
Voltage	415V±10% or as required
Frequency	50Hz±5% or as required
Enclosure	TEA0, TE
Eff. class	IE2, IE3, IE4



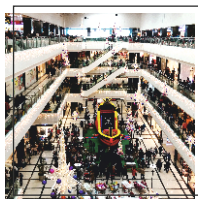
Technical Excellence:

In tunnel fire emergencies, the ability to quickly disperse toxic fumes and smoke is vital for saving lives. Smoke extraction motors drive the fans that perform this task, operating seamlessly even under the intense heat of fire zones.

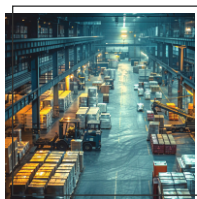
Key Applications:



Tunnels



Shopping Malls



Warehouses



Enclosed Car Parks



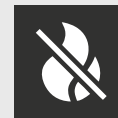
Theatres & Public Spaces



Industrial Buildings



Uncompromised Safety, Uninterrupted Performance



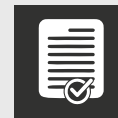
Fire-Resistant Durability:

Built to operate at 300°C for 2 hours, ensuring consistent performance during emergencies.



Compliance with International Standards:

Conforms to the latest BS EN 12101-3 standard for smoke and heat control systems.



Certified Reliability:

Motors are APLAB Certified, guaranteeing dependable performance under extreme conditions.

**The Backbone of
Fire Safety.**

IE6 Motors

Ultra-Premium Efficiency for a Sustainable Future

Our IE6 Motors represent the next generation of energy-efficient technology, delivering exceptional performance while significantly reducing power consumption. Engineered for industries aiming to optimise productivity and minimise their carbon footprint, these motors exceed current efficiency standards, making them the ideal choice for future-ready operations.

Designed with superior engineering and built to comply with IEC & IS standards, IE6 motors offer unmatched efficiency, durability, and seamless integration with existing systems. Their robust construction and advanced technology make them suitable for demanding industrial applications, ensuring consistent and reliable performance with minimal energy losses.

Product Specifications:

Motor Type	Ultra-Premium Efficiency IE6 Induction Motors
Efficiency Class	IE6 (Ultra-Premium Efficiency)
Frame Sizes	As per requirement
Mounting	Foot Mounted (B3) / Flange Mounted (B5) / Combination as per application
Insulation Class	F / H (as per customer needs)
Protection	IP55 / IP56 / IP65 as per requirement
Duty	Continuous Rated (S1) or as per specific application
Voltage	415V $\pm 10\%$ / Custom Voltage Available
Frequency	50Hz $\pm 5\%$ / 60Hz $\pm 5\%$
Phases	3-Phase
Enclosure	Totally Enclosed Fan Cooled (TEFC) / Custom Enclosure on request
Cooling Method	IC411 / IC416 or as per customer requirements
Eff. Compliance	Exceeds IEC & IS Standards for Energy Efficiency
Applications	HVAC, Textile, Process Industries, WWS, F&B, etc.
Eco-Friendly	Reduced Carbon Emission

Technical Excellence:

IE6 motors offer superior energy efficiency, achieving up to 20% reduction in energy losses compared to IE5 motors. Their advanced design ensures optimal performance, smooth speed control, and seamless integration with existing systems, making them ideal for industries prioritising energy savings and sustainability.

Key Applications:

HVAC Systems: Maximizes energy savings in large-scale ventilation and cooling applications.

Textile Industry: Ensures reliable and precise performance with lower power consumption.

Process Industries: Enhances operational efficiency with reduced energy losses.

Water & Wastewater Solutions (WWS): Ideal for pumping and fluid management with energy-efficient operation.

Food & Beverage (F&B): Delivers consistent performance with minimal energy wastage, ensuring compliance with eco-standards.

IE6
Coming
soon

Next-Level Efficiency, Unstoppable Performance



Seamless Integration:

Designed with the same dimensions as IE3 induction motors, making them easy to replace without requiring major modifications.



Enhanced Performance:

Ensures reliable and consistent operation even in demanding applications, with reduced energy losses and optimized speed control.



Future-Proof Compliance:

Stay ahead of evolving regulatory changes with motors that exceed current energy efficiency standards, ensuring long-term viability.

**Powering Efficiency,
Driving Sustainability.**

CENTRAL

- Bhilai ■
- Bhopal ■
- Indore ▲ ● ■

NORTH

- Delhi ▲ ■
- Faridabad ● ■
- Ghaziabad ● ■
- Gorakhpur ■
- Greater Noida ■
- Gurugram ■
- Haridwar ■
- Jannu ■
- Kanpur ■
- Mohali ■

EAST

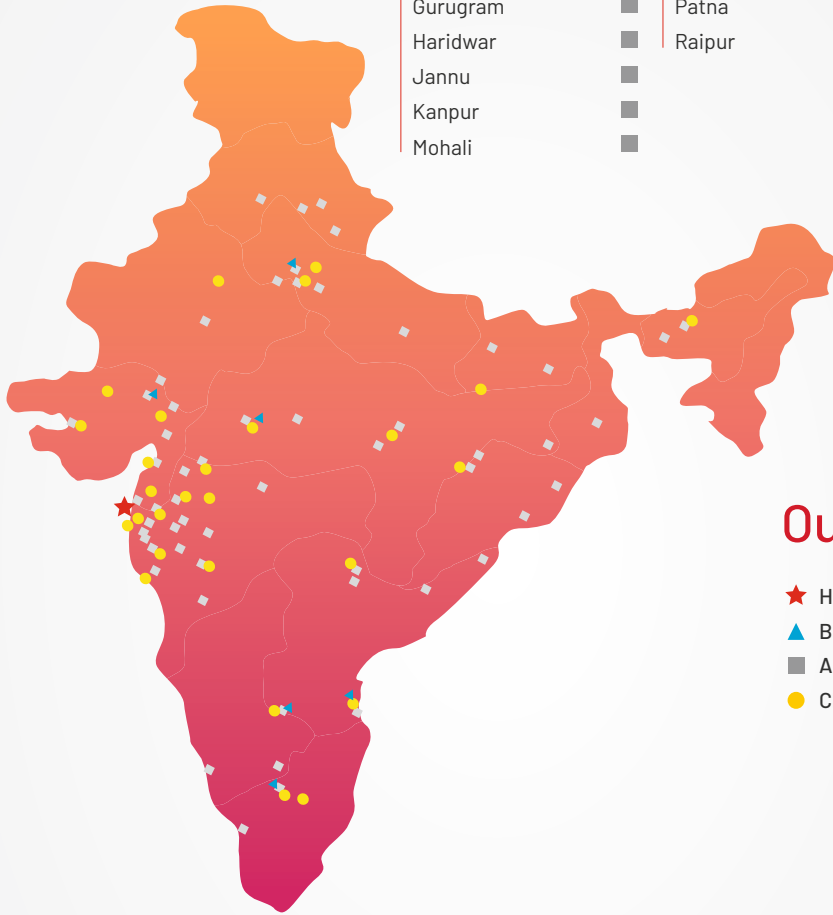
- Assam ● ■
- Bhubneshwar ■
- Guwahati ■
- Jamshedpur ■
- Kolkata ▲ ■
- Patna ■
- Raipur ● ■

SOUTH

- Bengaluru ▲ ● ■
- Belgaum ■
- Calicut Kerala ■
- Chennai ▲ ● ■
- Cochin ■
- Coimbatore ▲ ● ■
- Erode ■
- Hyderabad ▲ ■
- Secunderabad ● ■
- Vellkoviil ● ■
- Vijaywada ■
- Vishakapatnam ■

WEST

- Ahmedabad ▲ ■
- Ahmednagar ■
- Ambernath ■
- Ankleshwar ■
- Aurangabad ● ■
- Bhiwandi ● ■
- Daman ■
- Goa ■
- Jaipur ■
- Jalgaon ■
- Kolhapur ● ■
- Mehsana ■
- Mumbai ★ ● ■
- Nagpur ▲ ■
- Nashik ● ■
- Navi Mumbai ● ■
- Palghar ● ■
- Pune ▲ ● ■
- Raigad ● ■
- Rajkot ■
- Solapur ■
- Surat ● ■
- Thane ● ■
- Vadodara ● ■
- Vapi ● ■
- Vasai ● ■
- Vithal Udyognagar ■



Our Presence

- ★ Head Office
- ▲ Branches
- Authorized Service Centres
- Channel Partner (Dealers)

Manufacturing Facility, Vapi, Daman



www.hindmotors.com

HINDUSTAN MOTOR MFG. CO.

Plot No. 53/2, Street no. 7, MIDC,
Andheri (East), Mumbai - 400093. India.
Tel.: +91 22 42500500
Email: sales@hindmotors.com



Scan QR Code &
Discover HEM's Power

